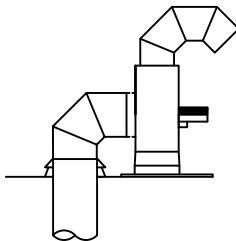
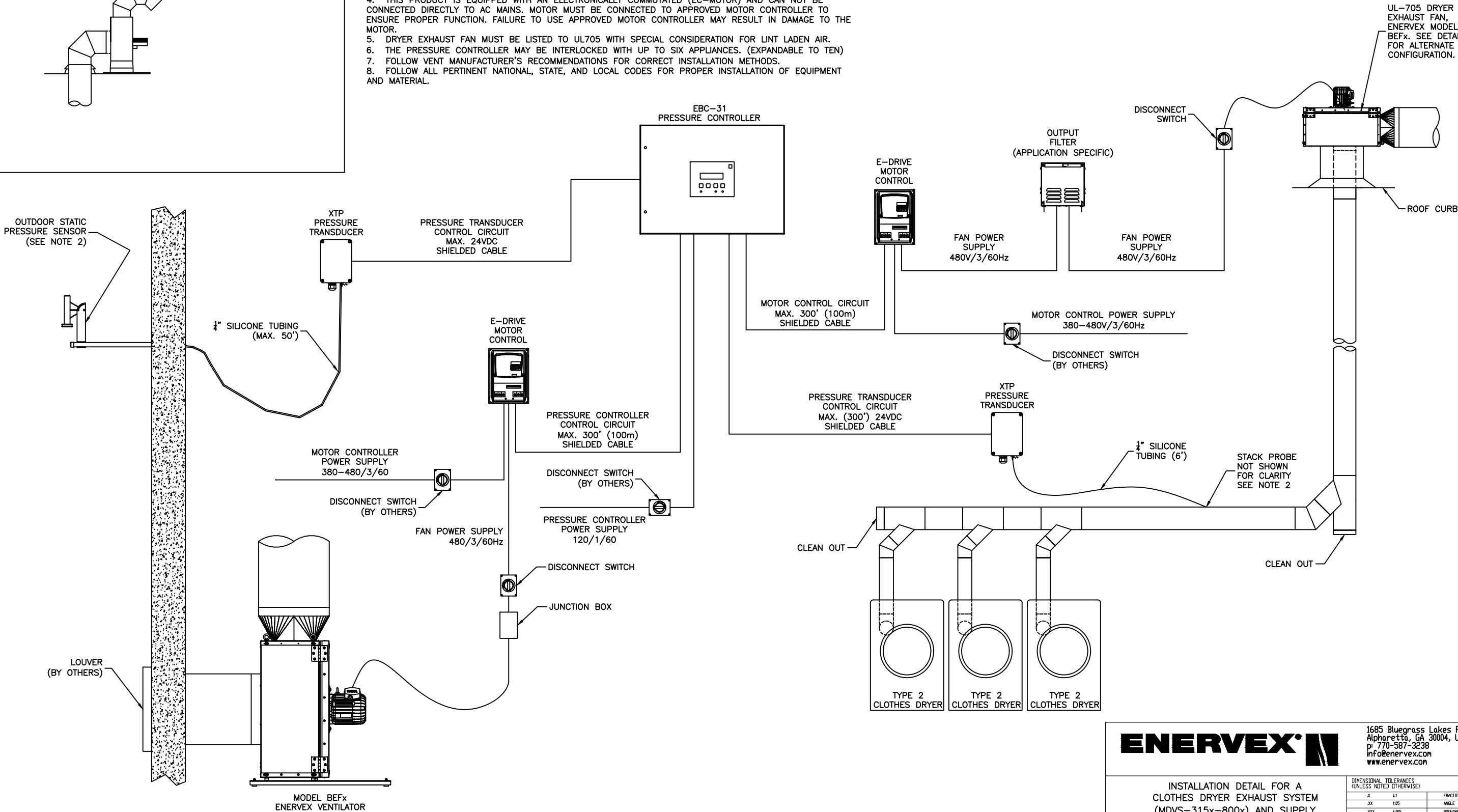


ALTERNATE CONFIGURATION DETAIL



DRAWING NOTES

1. WIRING INFORMATION IS SUITABLE FOR ENERVEX MDVS315x, MDVS355x, MDVS450x, MDVS500x, MDVS560x, MDVS630x, MDVS710x, OR MDVS800x.
2. FOLLOW EQUIPMENT MANUFACTURER'S INSTRUCTIONS FOR PROPER INSTALLATION OF FAN AND CONTROLS. STACK PROBE LOCATION AND OUTDOOR STATIC PRESSURE SENSOR LOCATION ARE JOB SPECIFIC; CONTACT ENERVEX, INC. AT 800-255-2923.
3. FOLLOW EQUIPMENT MANUFACTURER'S INSTRUCTIONS FOR PROPER INSTALLATION OF CLOTHES DRYERS.
4. THIS PRODUCT IS EQUIPPED WITH AN ELECTRONICALLY COMMUTATED (EC-MOTOR) AND CAN NOT BE CONNECTED DIRECTLY TO AC MAINS. MOTOR MUST BE CONNECTED TO APPROVED MOTOR CONTROLLER TO ENSURE PROPER FUNCTION. FAILURE TO USE APPROVED MOTOR CONTROLLER MAY RESULT IN DAMAGE TO THE MOTOR.
5. DRYER EXHAUST FAN MUST BE LISTED TO UL705 WITH SPECIAL CONSIDERATION FOR LINT LADEN AIR.
6. THE PRESSURE CONTROLLER MAY BE INTERLOCKED WITH UP TO SIX APPLIANCES. (EXPANDABLE TO TEN)
7. FOLLOW VENT MANUFACTURER'S RECOMMENDATIONS FOR CORRECT INSTALLATION METHODS.
8. FOLLOW ALL PERTINENT NATIONAL, STATE, AND LOCAL CODES FOR PROPER INSTALLATION OF EQUIPMENT AND MATERIAL.



NOTICE: THIS DRAWING CONTAINS PROPRIETARY INFORMATION AND IT SHALL NOT BE USED, REPRODUCED OR ITS CONTENTS DISCLOSED, IN WHOLE OR IN PART, WITHOUT THE EXPRESS WRITTEN CONSENT OF ENERVEX, INCORPORATED.

ENERVEX

1685 Bluegrass Lakes Pkwy
Alpharetta, GA 30004, USA
p. 770-587-3238
info@enervex.com
www.enervex.com

INSTALLATION DETAIL FOR A
CLOTHES DRYER EXHAUST SYSTEM
(MDVS-315x-800x) AND SUPPLY
AIR (MCAS-315x-800x)
480V THREE PHASE

DIMENSIONAL TOLERANCES (UNLESS NOTED OTHERWISE)			
X	±1	FRACTION	1/16"
XX	±0.5	ANGLE	12°
XXX	±0.5	ROUNDNESS	0.5
SIZE	DRAWING NUMBER		REV
B			A

DATE: 10/11/2016